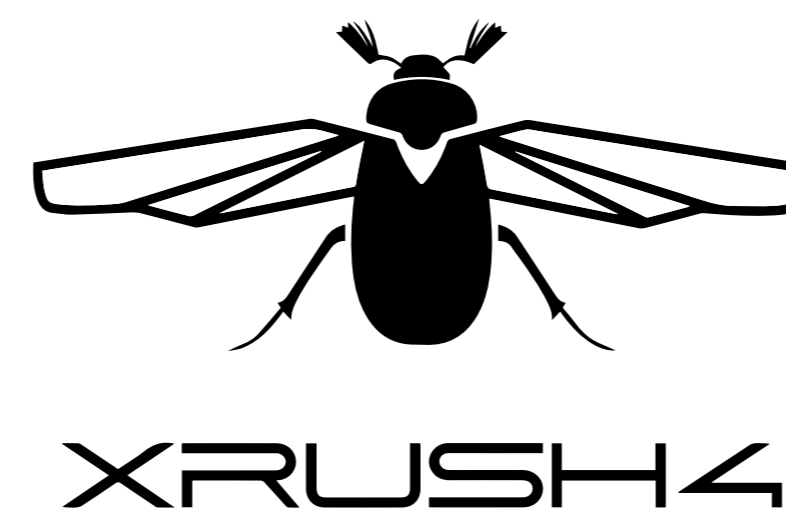
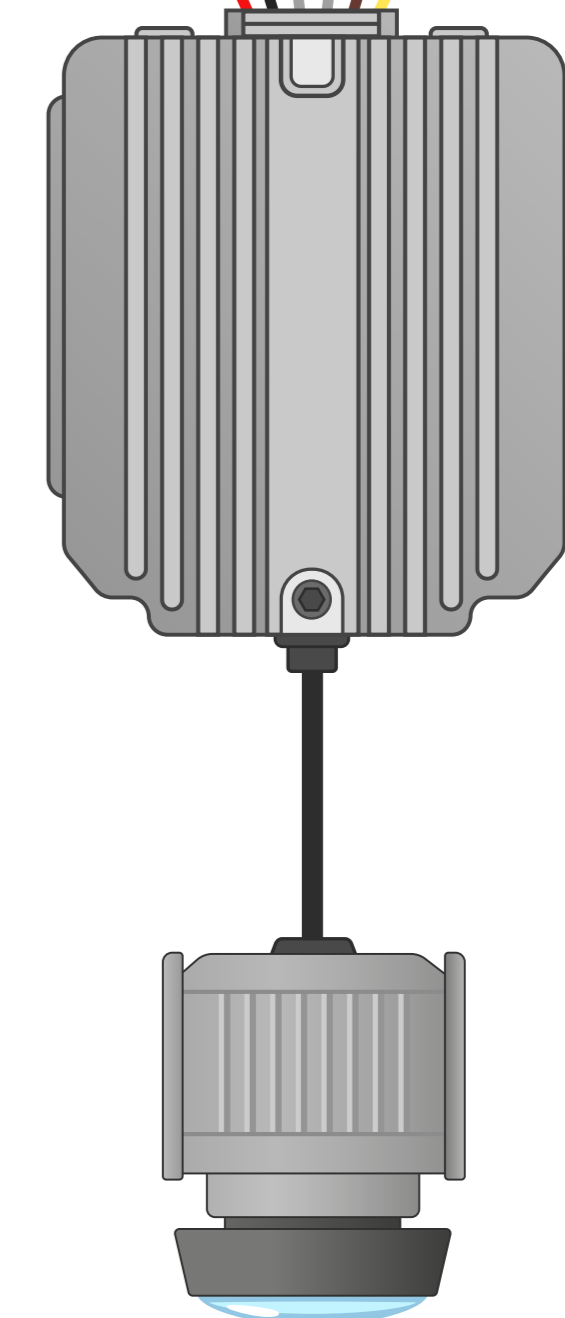
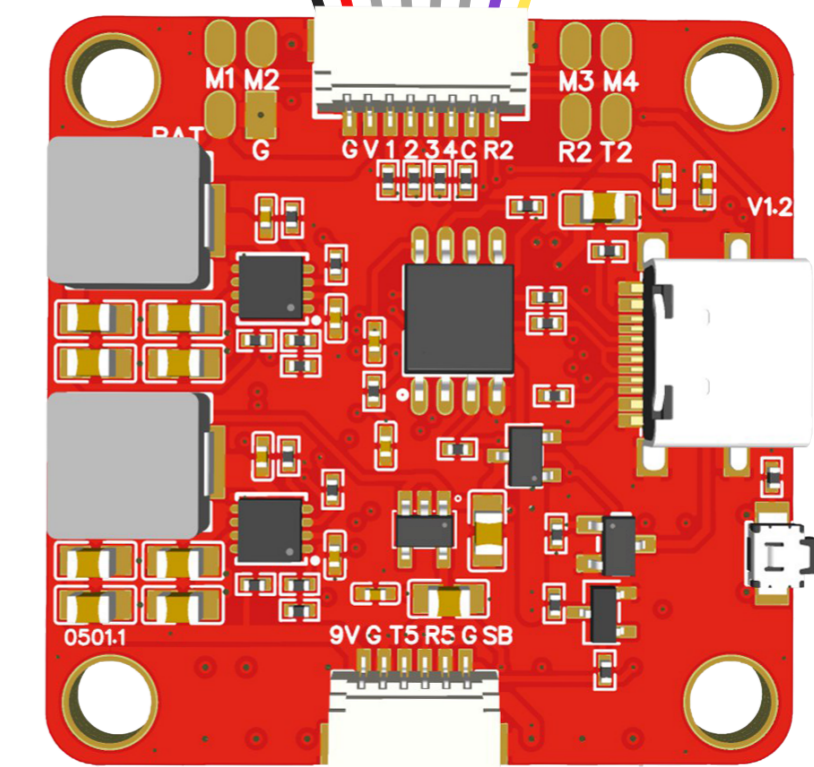
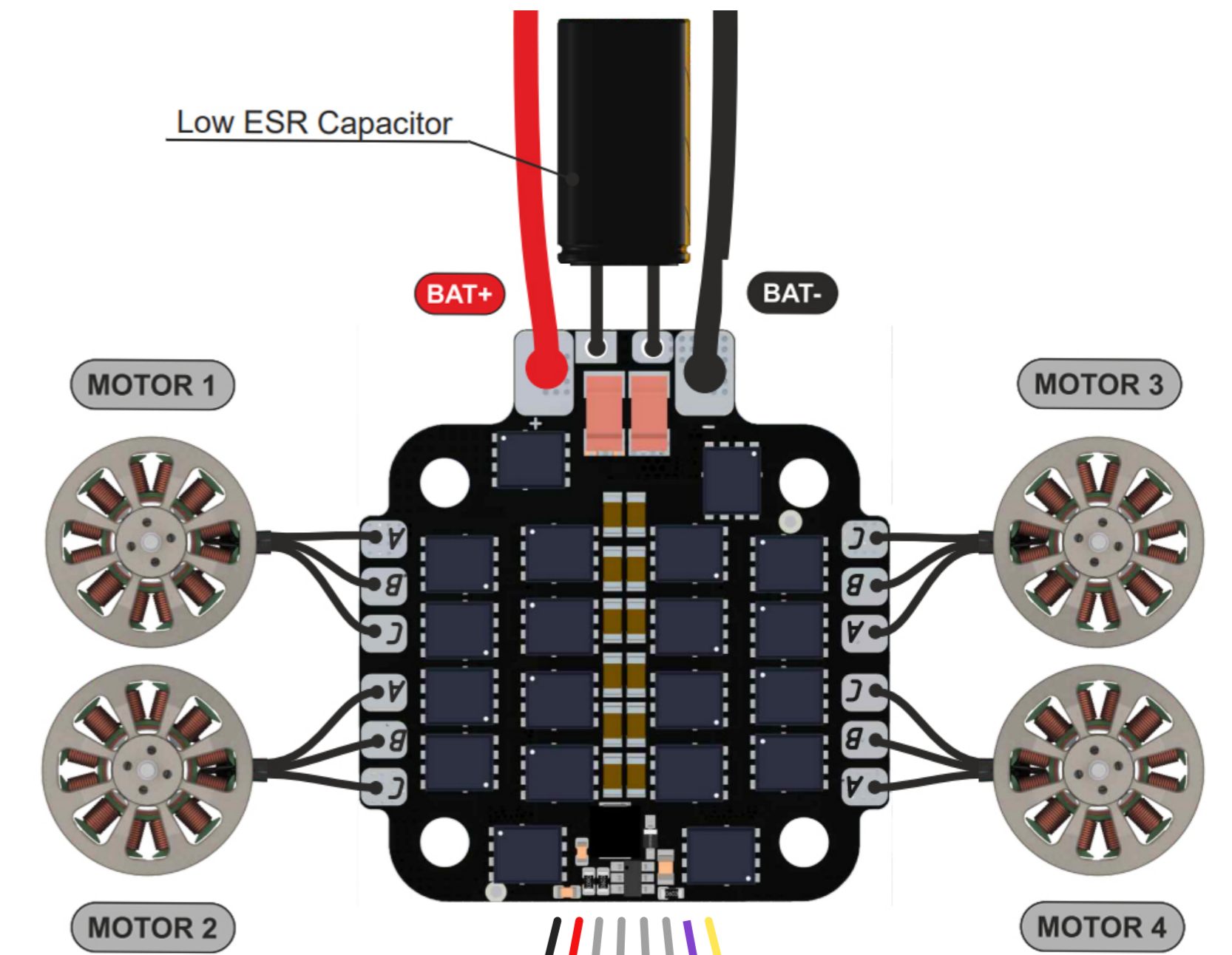
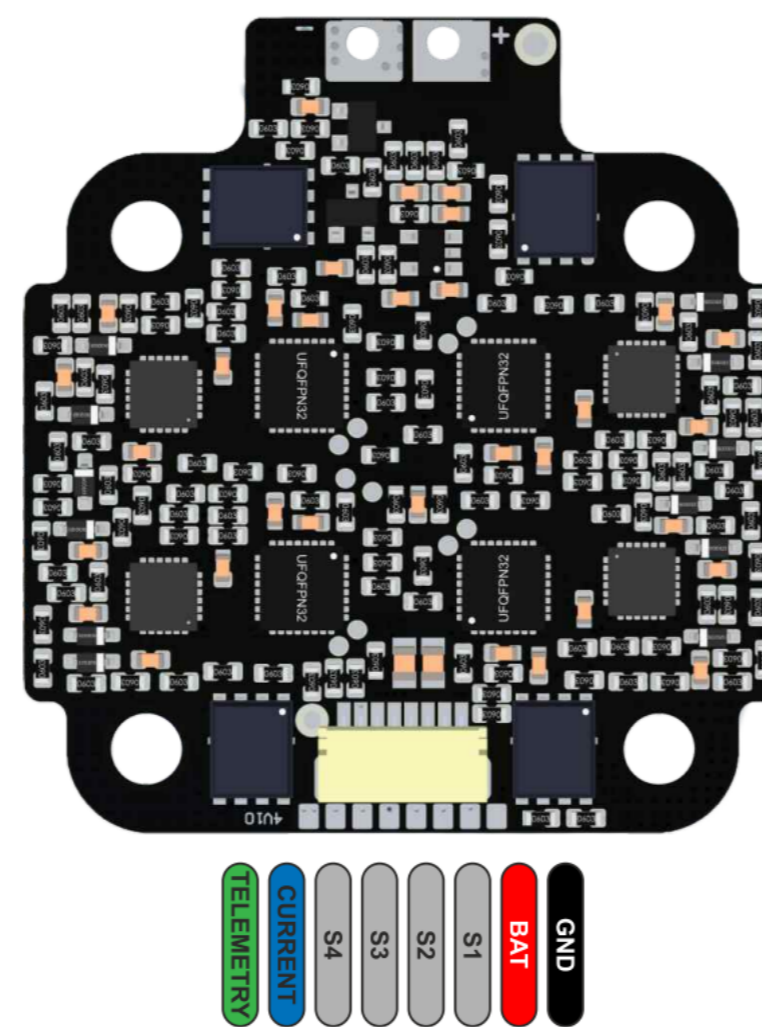
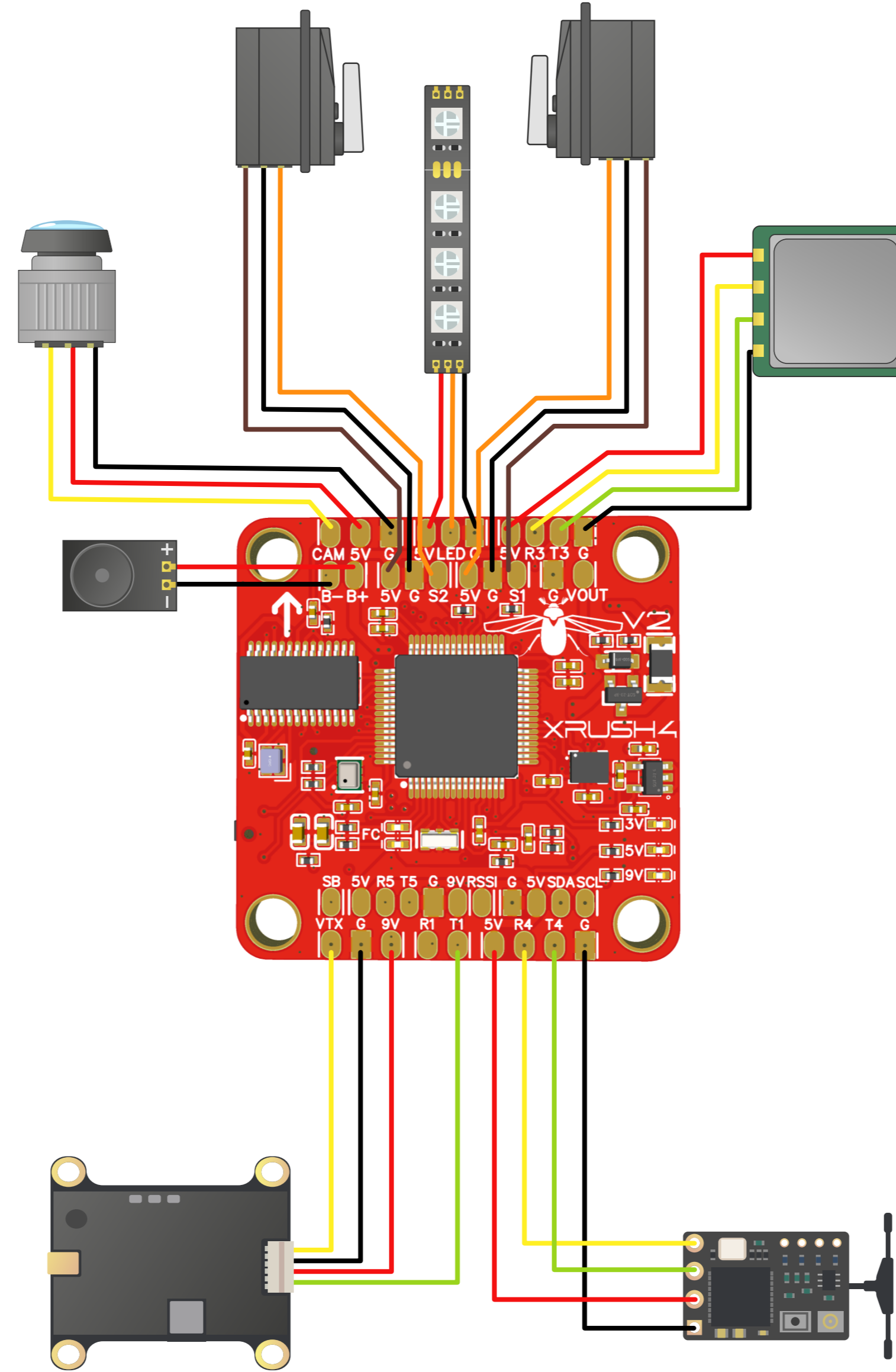


**XRush4 STACK**  
**FC: XRush4 F4 V2**  
**ESC: VBQ65A**



**Specifications FC: XRush4 F4 V2**

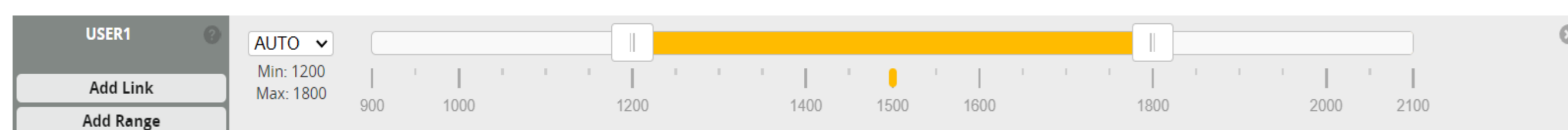
- MCU: STM32F405, 168MHz, 1MB Flash
- IMU: BMI270(Gyro&Accelerometer)
- Barometer: BMP280
- OSD: AT7456E
- Blackbox: FLASH 16 Mb
- Input voltage: 3S - 6S Lipo
- DC-DC: 2x (5V 2A , 9V 2A)
- Motor: 4x (PWM, Oneshot, Multishot i Dshot)
- PWM Output: 2x (S1 ,S2)
- UART: 5x
- I2C: 1x
- ADC inputs: 3x (VBAT, Current, RSSI)
- SBUS: UART1 RX1
- ESC Telemetry: UART2 RX2
- BUZER: (B+ , B-)
- LED Strip output pin: W2812 (LED)
- LED status power 3x: (9V, 5V, 3.3V)
- LED status FC 2x .
- Connectors:
  - USB Type-C
  - Connector 6pin: DJI O3,RunCam Link, Caddx Vista,DJI Air Unit
  - Connector 8pin: Telemetry ESC
- Supported Flight Controller Firmware:
  - BetaFlight: XRush4 F4V2
  - INAV: XRush4 F4V2
- Side: 37.5x37.5x8mm
- Mounting: 30.5x30.5mm ,  $\varnothing$ 4mm
- Weight: 9 g.



**Specifications ESC: VBQ65A**

- Input voltage: 2S - 6S Lipo
- Output current: 65A
- Peak current: : 85A
- Firmware: AM32
- Protocol: (PWM, DSHOT)
- Current sensor : Yes
- Telemetry: Yes
- Side: 50x45x6.5mm
- Mounting: 30.5x30.5mm ,  $\varnothing$ 4mm
- Weight: 41 g.

**ON-OFF DC-DC 9v**



**Setting the current sensor**

